

# Archaeological Research in Brown Hill's Pasture Kingsdale



A Batty & N Crack  
2012

Front cover Kingsdale looking North East

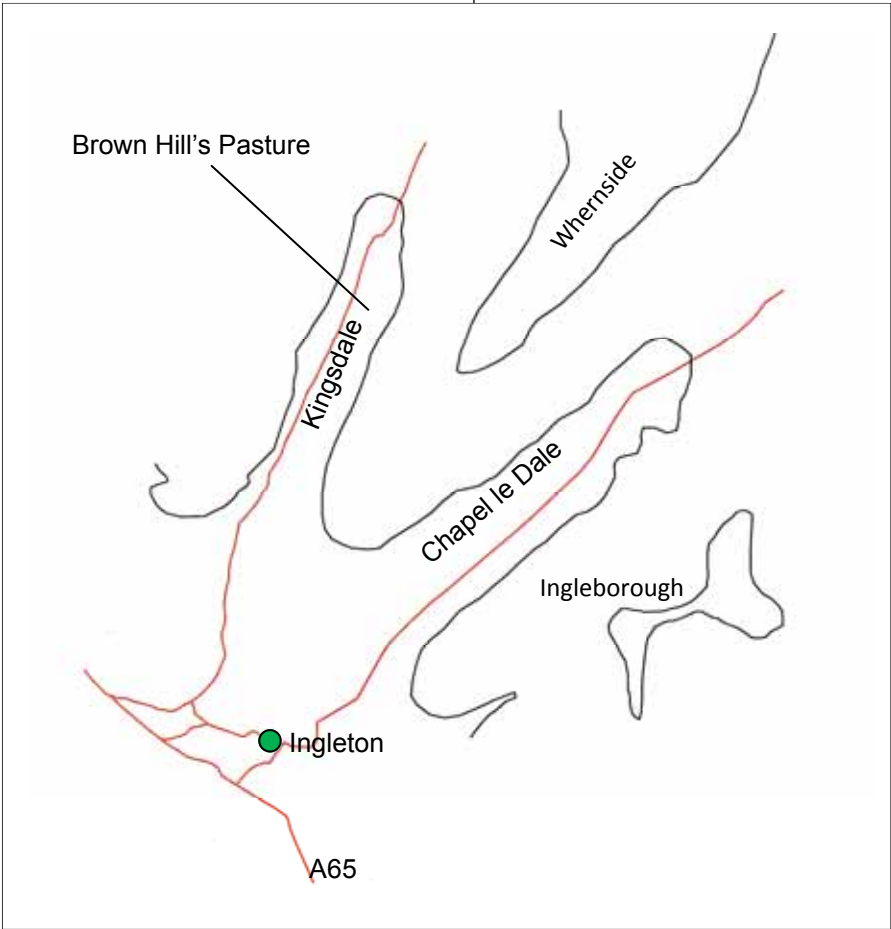
## **Acknowledgements**

The authors would like to thank the following people.

The Coates family at Braida Garth for permission to carry out this research.

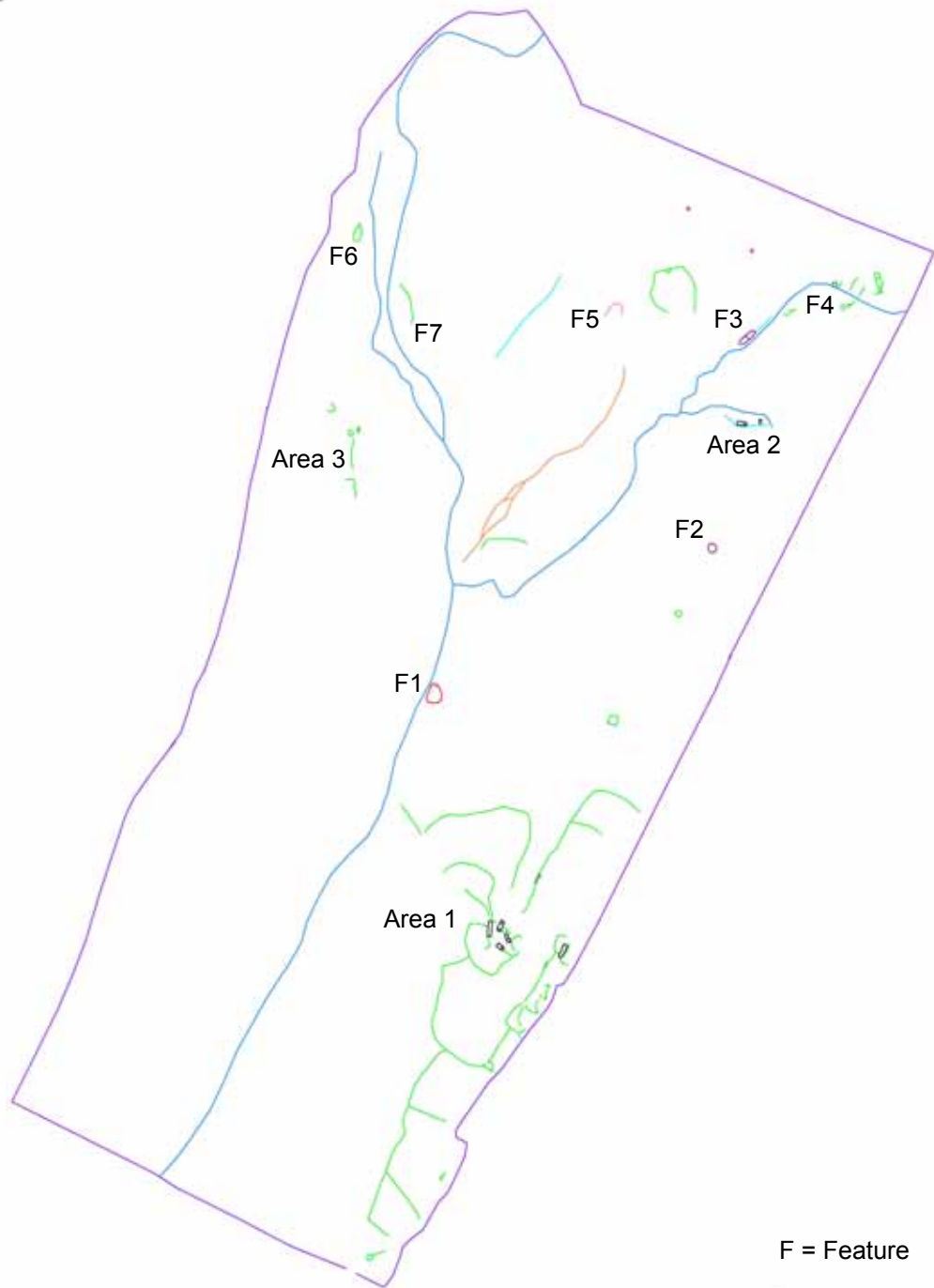
Mr Allan King for allowing us to publish his drawing of Ewe Slack.

Mrs Anita Batty for desktop publishing and editing.

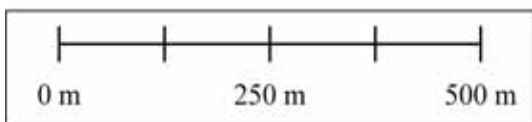


Location Map

# BROWN HILL'S PASTURE KINGSDALE



F = Feature



Surveyed by A Batty 2012

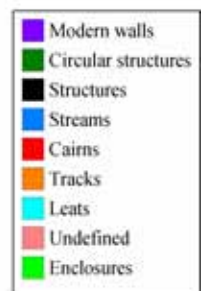


Fig 1

## Archaeological Research in Brown Hills Pasture, Kingsdale

Brown Hills Pasture (SD 710 790), is situated on the Valley floor and the eastern side of Kingsdale (Front cover). In 2006 we commenced archaeological research in this field, carrying out a GPS survey (Fig.1), geophysical surveys and aerial photography. The GPS survey shows settlements and enclosures covering a large area of the eastern side of the field, and also, across the northern end. The valley floor to the west of Kingsdale Beck has many remnant channels of an ancient braided river system. In the centre of the survey area, adjacent to the river, is a large cairn called Apron Full of Stones. In the 1930's the centre of the cairn was thrown out down to the old ground surface and then abandoned leaving a doughnut shaped structure. An archaeological excavation of this cairn was carried out in 1972 (King A 1978) the results suggested that the cairn is around 4000 years old. We have no knowledge of any other archaeological excavations in Brown Hills Pasture, a surveyed drawing of the site at Ewe Slack was produced by Mr A King and is shown in (Fig. 2).

We have divided the survey into three main areas, with all measurements having been taken from the centre of the visible wall remains.

### Area 1

This site is located in an area called Ewe Slack and has the remains of 6 structures, some or all, of which may have been roofed. Structure 1 is possibly for stock housing, Structures 2 and 5 may represent dwellings, with 3 and 4 being ancillary buildings for domestic or agricultural purposes. Structure 6 is difficult to define and may be either stock housing, or a dwelling. We tend to favour stock housing. There is slight evidence that structure 2 may represent two periods of construction and these remains may also be overlying a circular structure on the eastern side. All these remains are abutted by small enclosures and field systems. A gradiometer survey (Plate1) shows high readings in structure 5 a charcoal sample was taken and has been radiocarbon dated (Fig.3).

Structure 1	19.5m x 4.4m
Structure 2	13.5m x 5.1m
Structure 3	6.6m x 3.6m
Structure 4	4.8m x 3.6m
Structure 5	9.4m x 4.5m
Structure 6	16.8m x 4.9m

## Area 2

Within this area are the remains of two structures and a leat which runs east to west on the southern side. Structure 1 has possibly been a dwelling and structure 2 an ancillary building either for domestic or agricultural use. It is interesting that these remains do not appear to have any enclosures associated with them. A leat has been formed which runs from a spring on the eastern side and re-joins the outflow from the spring on the western side. The leat runs very close to the southern side of Structure 1 and on the south-western corner there appears to have been a small construction, possibly the remains of a corn grinding structure. A gradiometer survey (Plate.3) shows high readings in Structure 1 where a charcoal sample was extracted from what we believe to be a hearth, this has been radiocarbon dated (Fig. 4).

Structure 1 12.3m x 4.5m

Structure 2 5.0m x 3.3m

## Area 3

This area is on the valley floor, adjacent to an ancient braided river system, we do not know the purpose of these remains. A gradiometer scan of the remains revealed no high readings which may have shown evidence of occupation. There is a peat bog adjacent to these features, this is the most accessible area in Kingsdale for a Turbary site, which may possibly have been worked before the enclosure act of 1819, after which a field above Yordas Wood was allocated for the Parish Turbary rights. We have classified the stone remains as enclosures, however, if this is a Turbary site then the remains may be related to it.

Enclosure 1 Crescent shaped wall remains on edge of old river channel.

Enclosure 2 6.2m in diameter.

## DESCRIPTION OF OTHER FEATURES

### Feature 1: Plate 4.

A large cairn (Apron Full of Stones) situated on the edge of a river terrace, although this may not have been the case when the cairn was built, as erosion by the river has cut back the terrace to its current position. An archaeological excavation was carried out on this site in July 1972 (King A.1978) and it is thought that the cairn dates to the late Neolithic/Early Bronze Age (c 2000BC). The artefact shown in (Plate.11) was found in the river adjacent to the cairn by Mr Peter Kitchen, it is unknown whether there is any relationship between the two.

### Feature 2: Plate 5.

This feature was discovered while scanning an area of rushes with a gradiometer, the rushes were cut and cleared and a gradiometer survey carried out (Plate.2) this revealed areas of intense burning. A sample was taken from one area and radiocarbon dated (Fig. 5). The survey suggests that this may be a posted circular feature possibly a round house or ritual site.

### Feature 3: Plate 6.

Here is an unusual feature which appears to be the remains of two small ponds with a leat entering from the north east and an outlet returning water to the stream at the south west. Whilst its purpose is uncertain, it could be related to fish farming similar to that being carried out on monastic sites, albeit on a much smaller scale. Large numbers of fish were once taken from the small streams in Kingsdale, it was not unusual to catch 200 a day in the 19th century.

### Feature 4: Plate 7.

These features are difficult to define, but could be robbed cairn remains, small structures, or enclosures.

### Feature 5: Plate 8.

This is a turbarry site with tracks approaching from the south. The large enclosure on the east may also be related to the tracks and turbarry site.

Feature 6: Plate 9.

A sheep fold that was used in the early 20th century.

Feature 7: Plate 10.

This shows an exposed wall foundation on the edge of an eroding river terrace a peat sample was taken from beneath a foundation stone and radiocarbon dated (Fig.6).

## Conclusions

The settlement at Ewe Slack appears to have structural remains very similar to other sites where we have carried out research (Batty 2010 & Batty 2012). The radiocarbon date for Ewe Slack (Fig.3), is once again within the Anglo-Saxon period. Evidence is accumulating for a considerable number of settlements for this period in the local area. We are still unable to say if the occupants of these settlements are of Anglo-Saxon descent or native British, this is a problem that may be difficult to resolve. This issue is also similar to that posed by trying to define native Norse settlements.

The structural remains in Area 2 are similar to those at Ewe Slack but here we have been unable to find any evidence of enclosures or field systems associated with the possible dwelling/stock housing structures. The radiocarbon date (Fig.4), shows this site to be 14th century. A structure similar to this, and also without any evidence of enclosures or field systems, has been excavated at Kingsdale Head (Batty & Batty 2007), and was dated to the 13th century. The Saxon period sites do appear to represent a different type of agricultural system compared to the 13/14th century medieval sites, which may have a more transient purpose. Several other sites with similar remains have been found in Kingsdale and reports will be published in the near future.

## **Bibliography**

Batty A & Batty A (2007) *The Kingsdale Head Project*. Ingleborough Archaeology Group

Batty, A. (2010) *Archaeological Remains in Clapham Bottoms*.

[www.ingleborougharchaeology.org.uk](http://www.ingleborougharchaeology.org.uk)

Batty A (2012) *Archaeological Research in Crummack Dale*.

[www.ingleborougharchaeology.org.uk](http://www.ingleborougharchaeology.org.uk)

King A (1972) *Apron Full of Stones a Prehistoric Cairn, Thornton in Lonsdale, North Yorkshire*. The Yorkshire Archaeological Journal, Vol. 50, 1978

## **Radiocarbon Dating References**

Radiocarbon dating was carried out by SUERC (Scottish Universities Environmental Research Centre)

Fig 3 SUERC-21620(GU-17877)

Fig 4 SUERC-18872(GU-16723)

Fig 5 SUERC-20399(GU-17325)

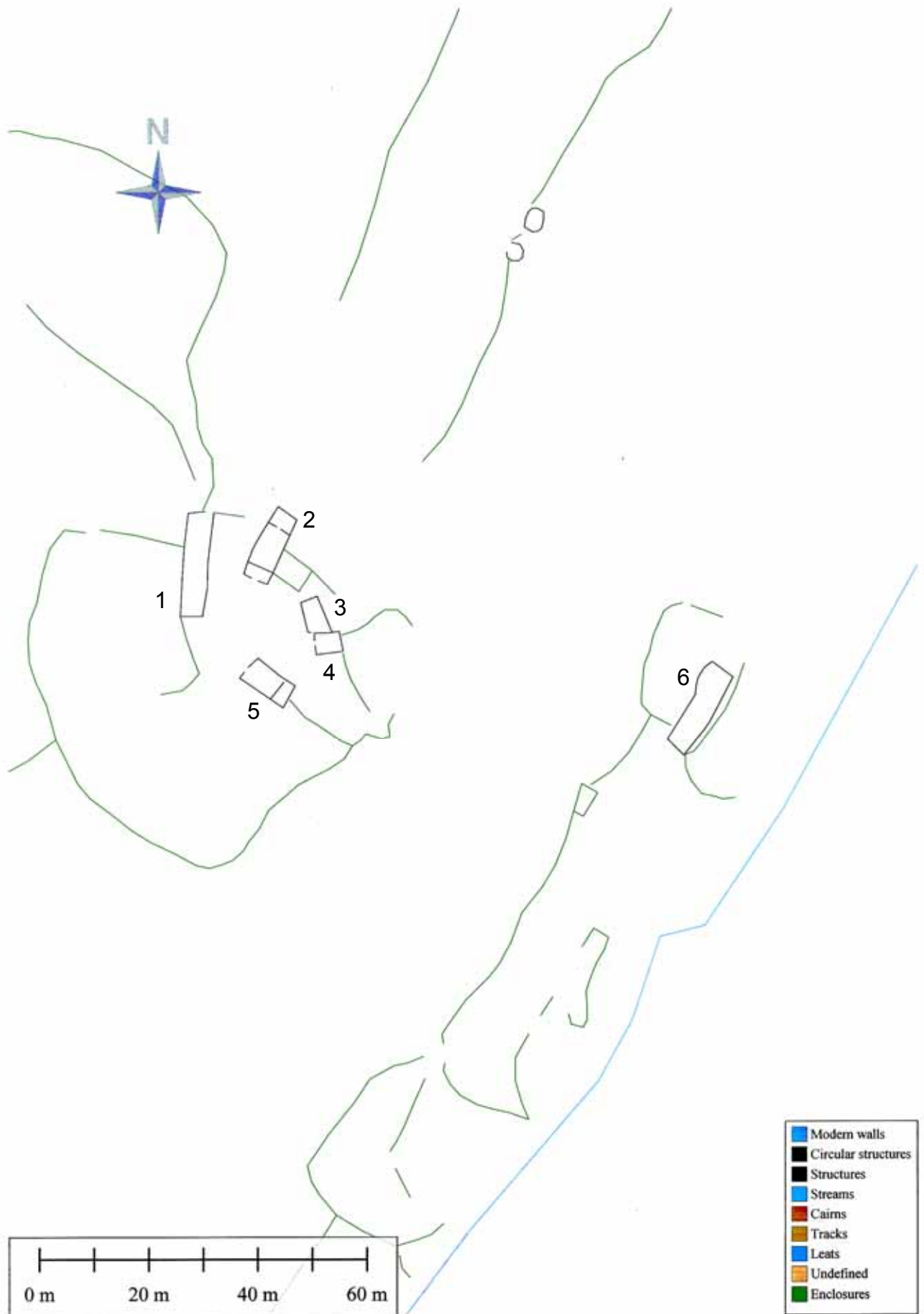
Fig 6 SUERC-21246(GU-17761)

## **Photography**

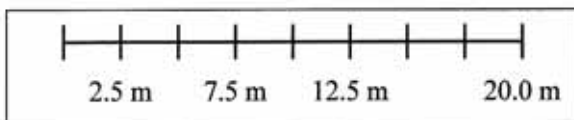
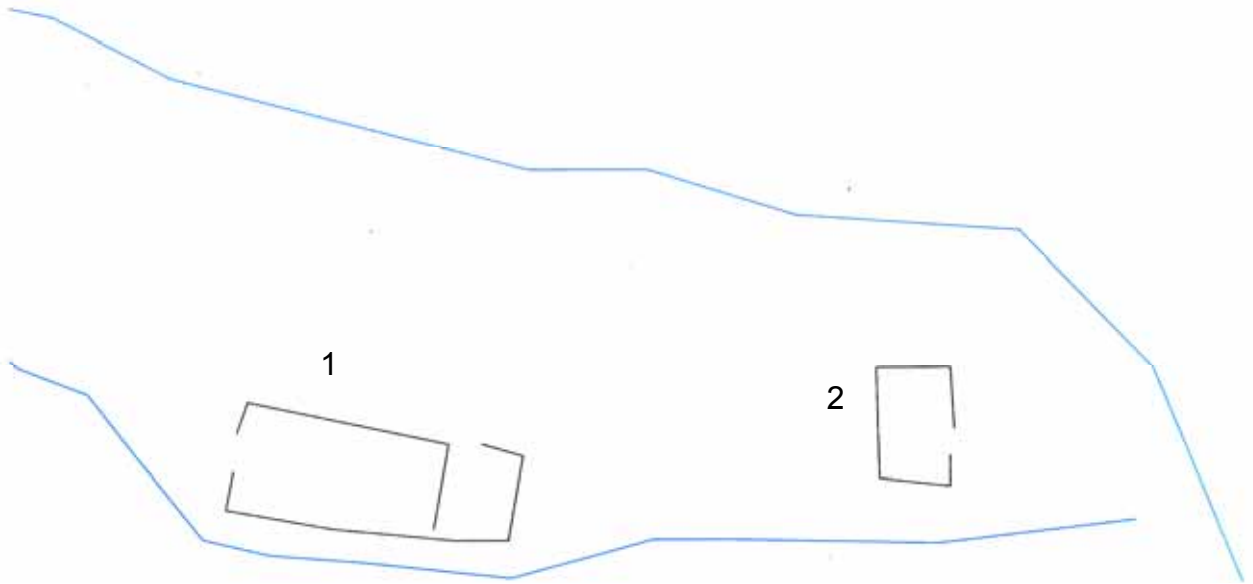
All photographs taken by A Batty.

## **DVD**

Interactive survey, and hyperlinked photographs.



Area 1



■	Modern walls
■	Circular structures
■	Structures
■	Streams
■	Cairns
■	Tracks
■	Leats
■	Undefined
■	Enclosures

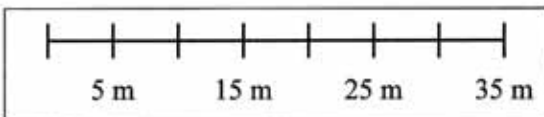
Area 2



1

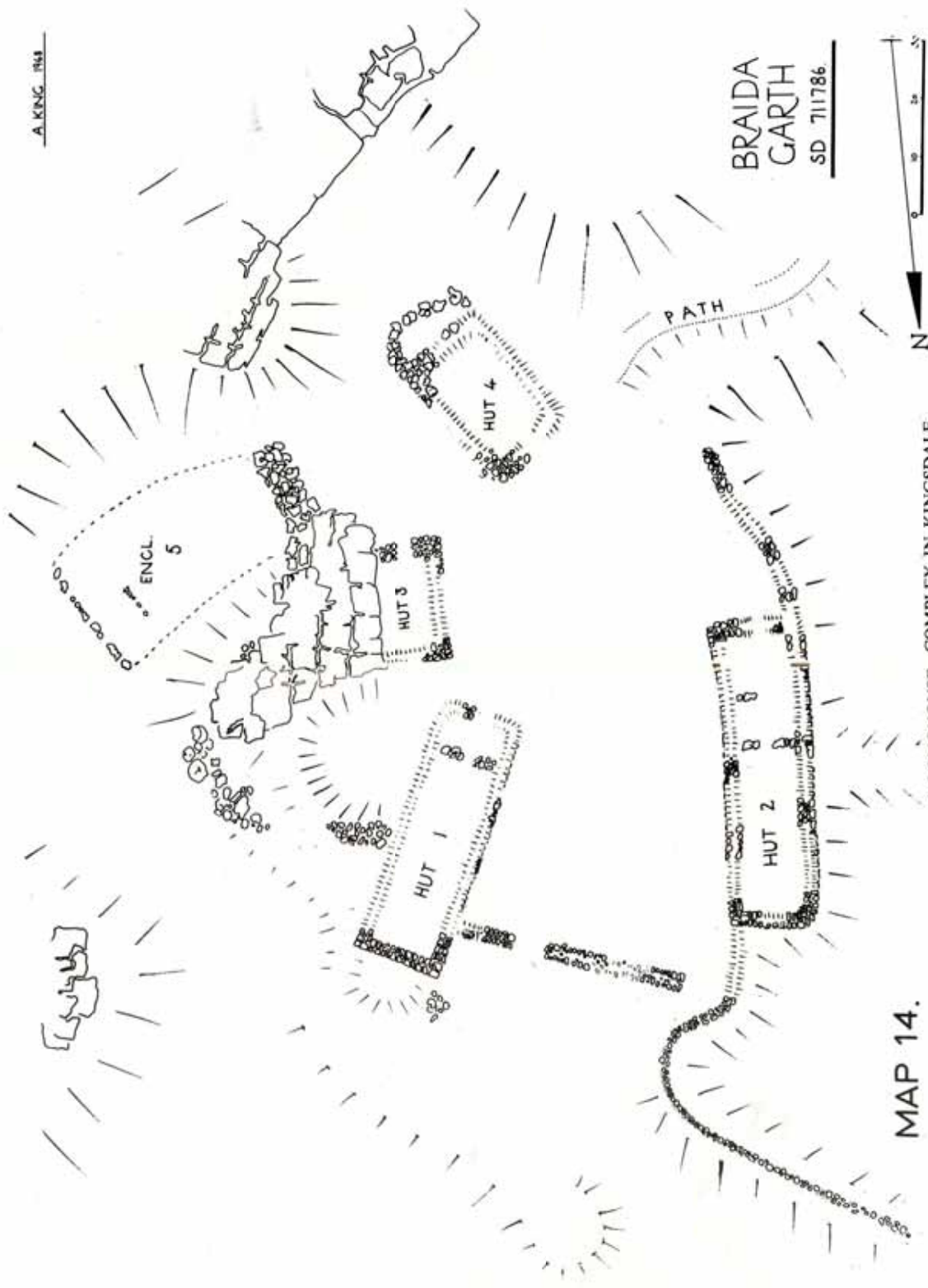


2



	Modern walls
	Circular structures
	Structures
	Streams
	Cairns
	Tracks
	Leats
	Undefined
	Enclosures

Area 3



BRAIDA  
GARTH  
SD 711786



MAP 14.

A LONGHOUSE COMPLEX IN KINGSDALE.

Fig 2 Site at Ewe Slack Drawn by Mr A King

## Calibration Plot

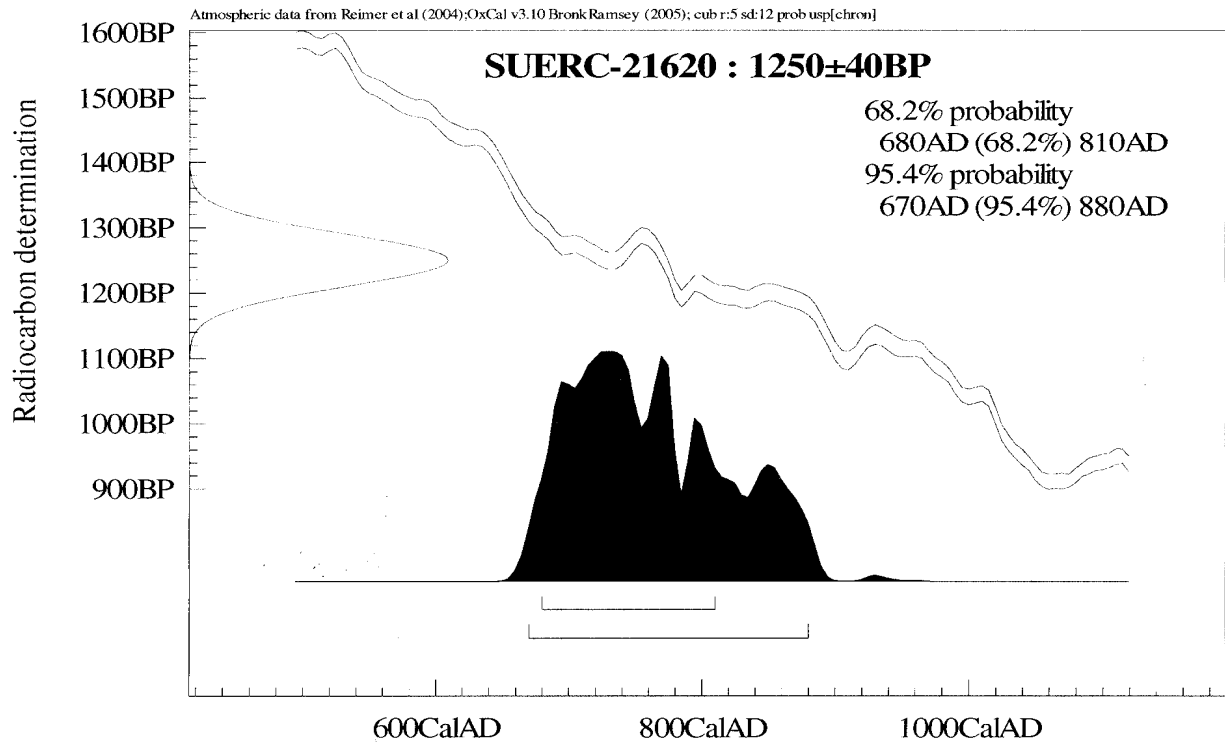


Fig 3

## Calibration Plot

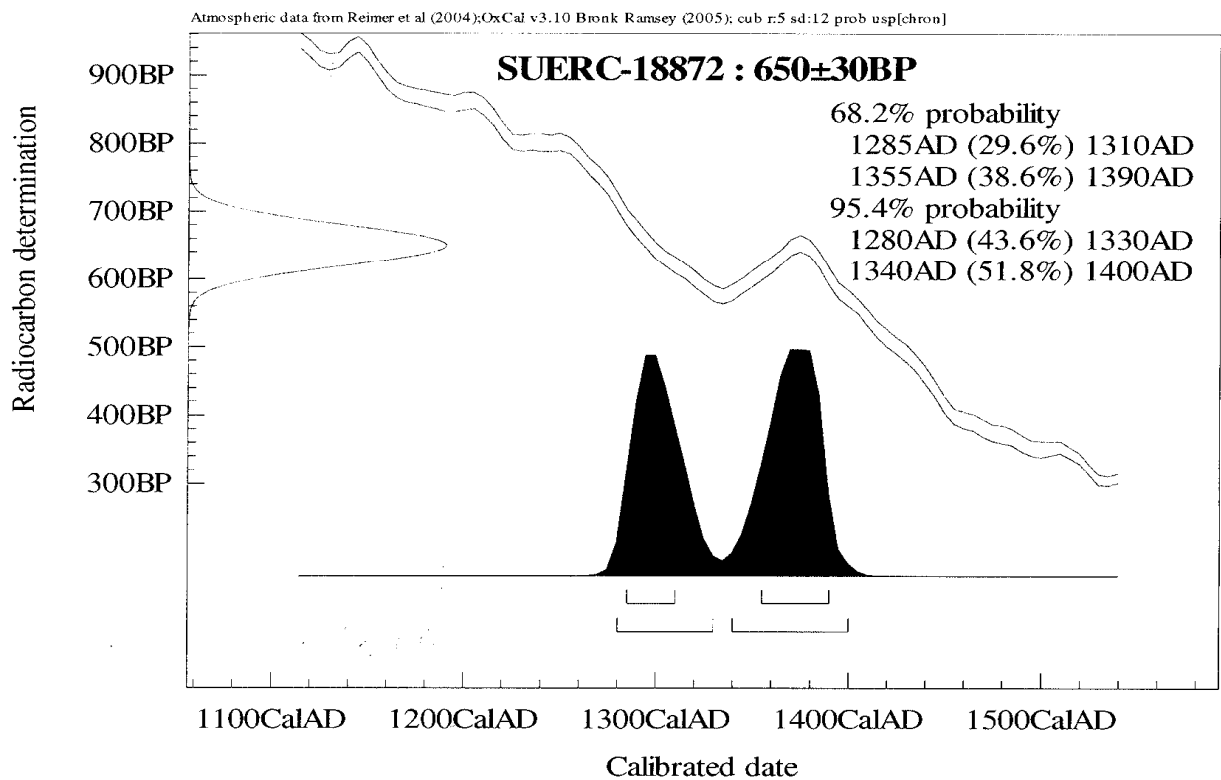


Fig 4

### Calibration Plot

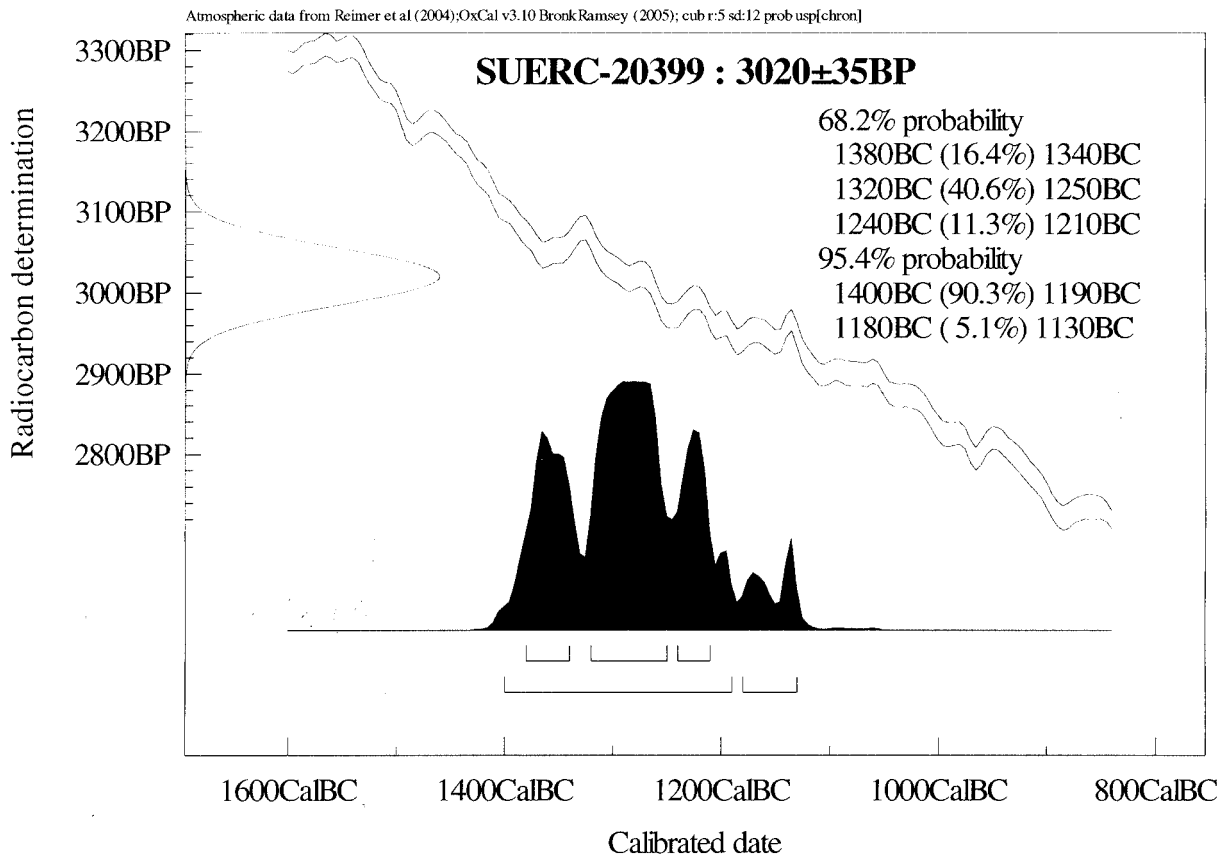


Fig 5

### Calibration Plot

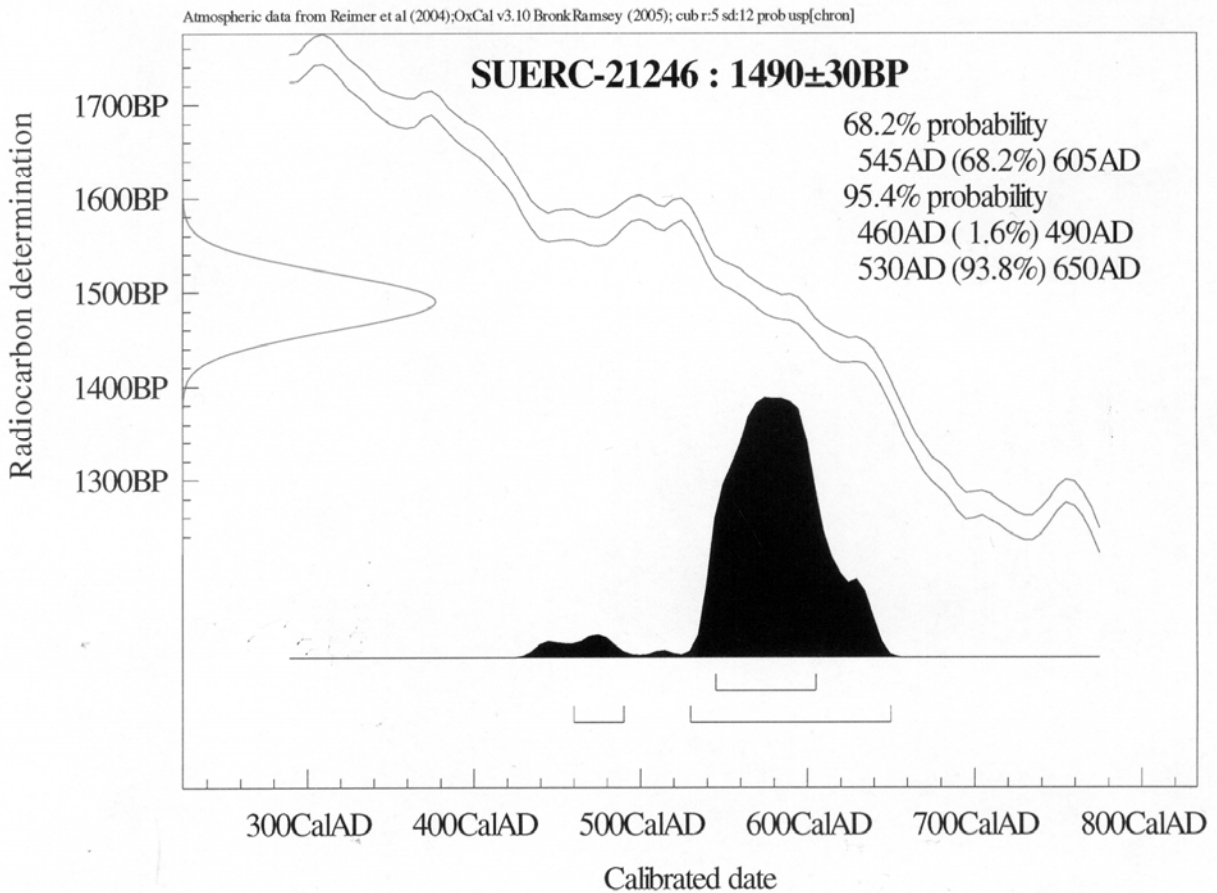


Fig 6

**Data Set:**

Top Left Corner X,Y: 1, 1

Bottom Right Corner X,Y: 320, 640



**Display Parameters**

Shade Plot (Clip)

Minimum: -3

Maximum: 3

Contrast: 1

Units: Std Dev

Palette: greycol7.ptt

Palette Option: Normal

Plotting Scale: 1:200

Printer Resolution (X): 600dpi

Printer Resolution (Y): 600dpi

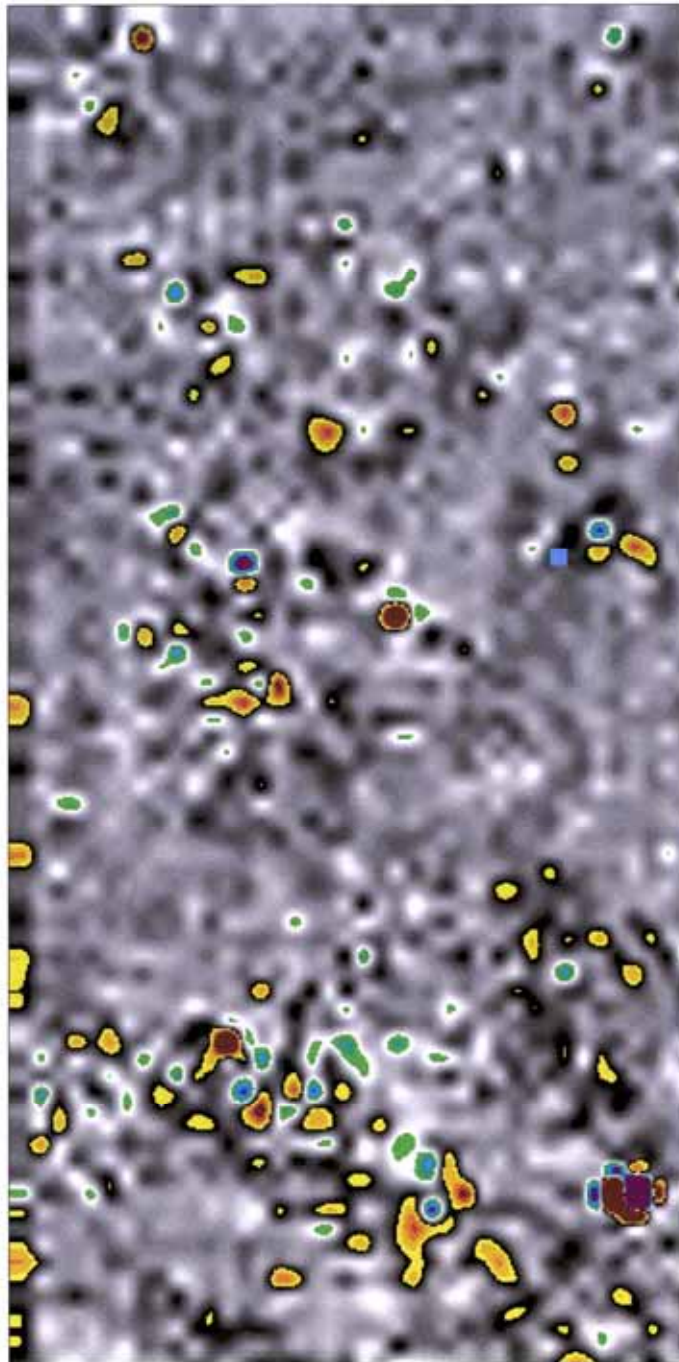
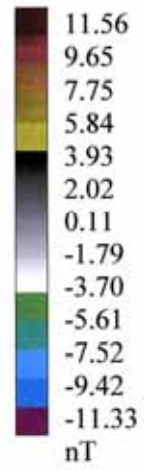


Plate 1 20m x 40m Gradiometer survey Area 1

Geoplot 3.0 - Gradiometer Data - c:\geoplot\comp\llet2\llet2.cmp +++

**Data Set:**

Top Left Corner X,Y: 1, 1  
Bottom Right Corner X,Y: 320, 640

**Display Parameters**

Shade Plot (Clip)  
Minimum: -3  
Maximum: 3  
Contrast: 1  
Units: Std Dev  
Palette: greycol7.ptt  
Palette Option: Normal  
Plotting Scale: 1:150  
Printer Resolution (X): 600dpi  
Printer Resolution (Y): 600dpi

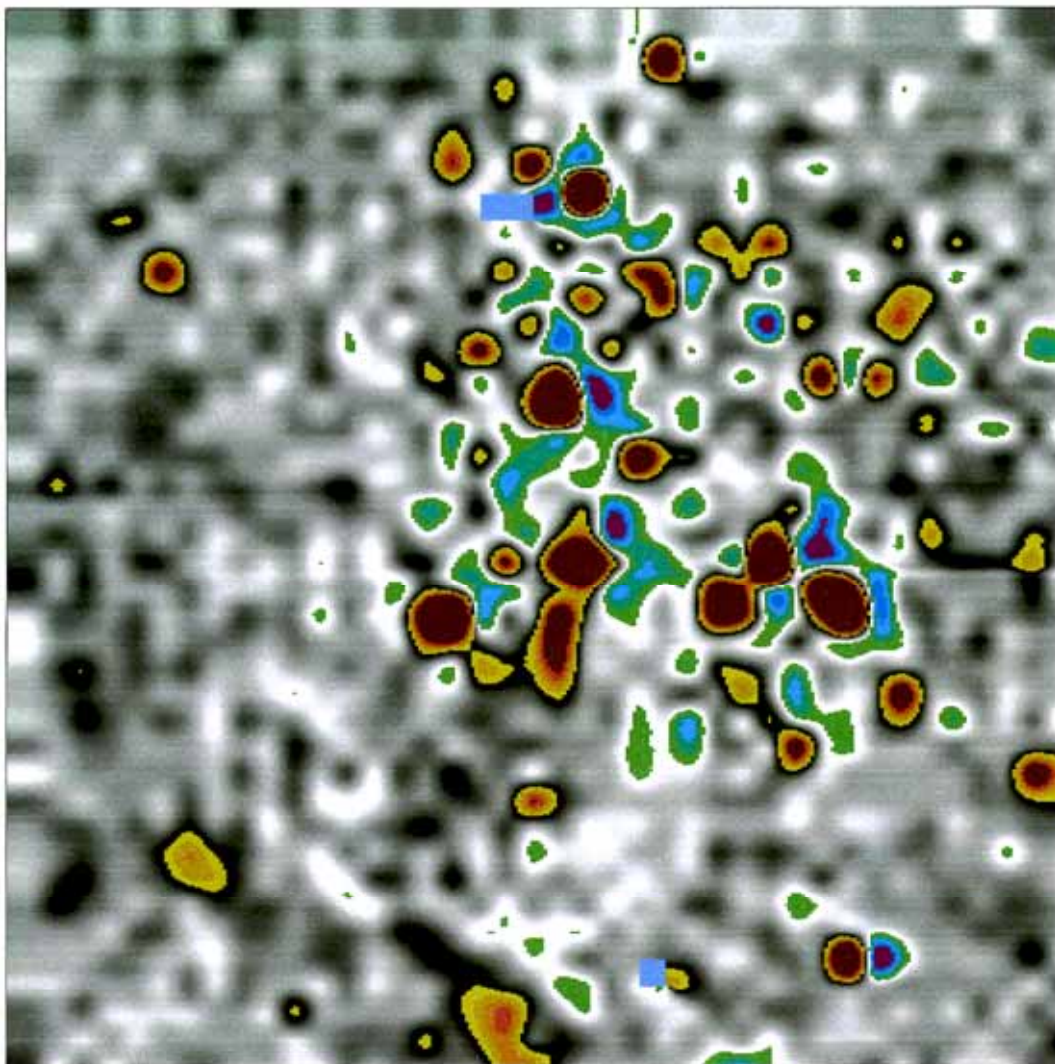
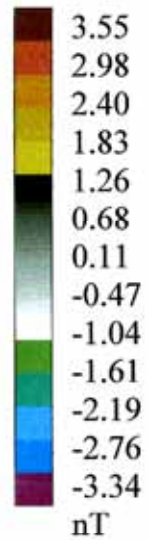


Plate 2 20m x 20m Gradiometer survey of feature 2

**Data Set:**  
Top Left Corner X,Y: 1, 1  
Bottom Right Corner X,Y: 320, 960

**Display Parameters**  
Shade Plot (Clip)  
Minimum: -3  
Maximum: 3  
Contrast: 1  
Units: Std Dev  
Palette: greycol7.ptt  
Palette Option: Normal  
Plotting Scale: 1:300  
Printer Resolution (X): 600dpi  
Printer Resolution (Y): 600dpi

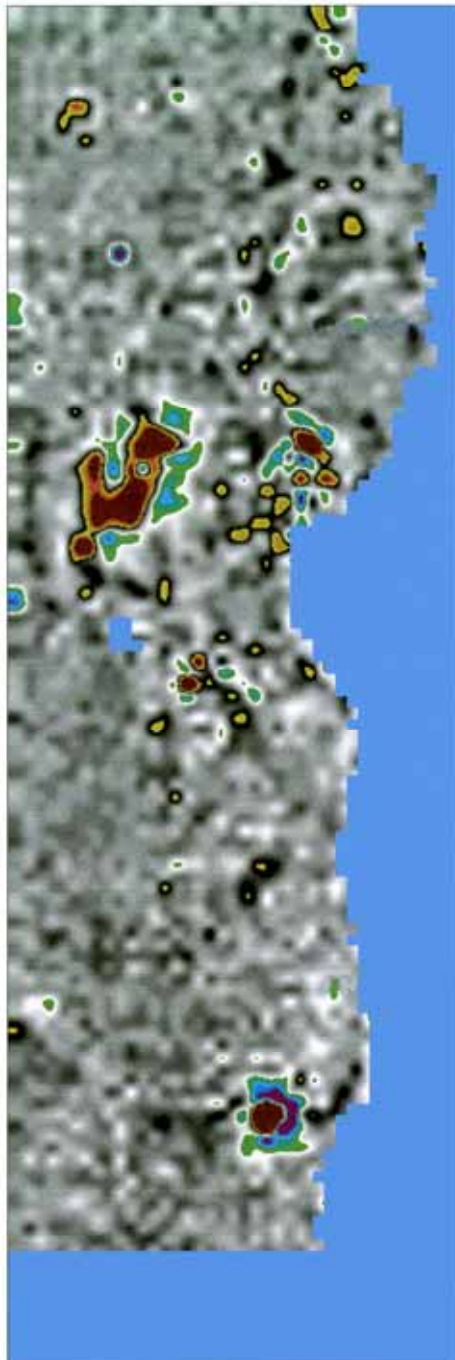
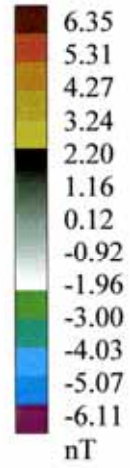


Plate 3 20m X 60m Gradiometer survey of Area 2

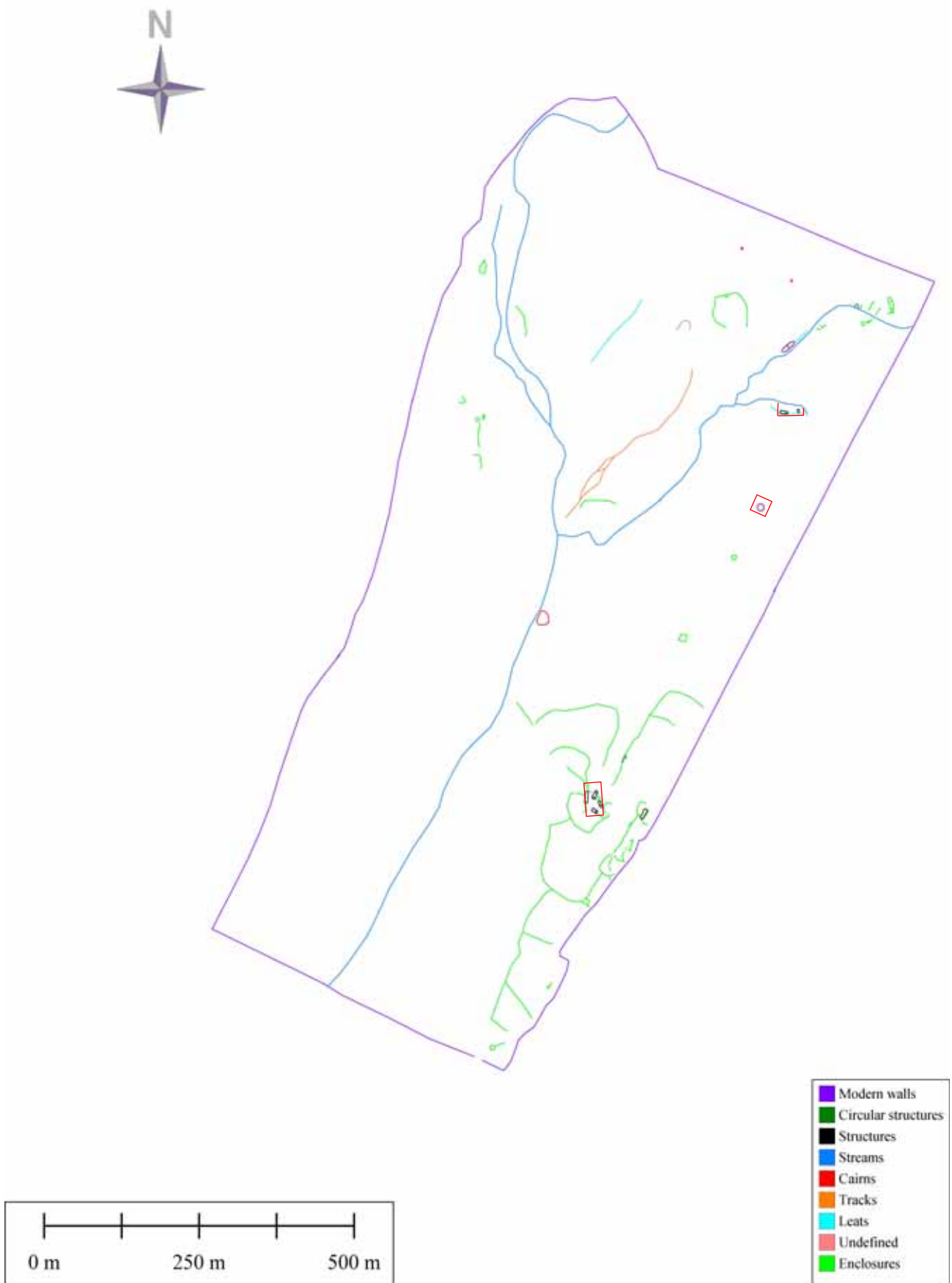


Fig 7 Location of Geophysical surveys



Plate 4 Feature 1 Apron full of Stones



Plate 5 Feature 2 Bronze Age Round house/Ritual site



Plate 6 Feature 3 Leat and two ponds.



Plate 7 Feature 4 Remains of cairns or small structures.



Plate 8 Feature 5 Turbary site.



Plate 9 Feature 6 Sheep-fold.



Plate 10 Feature 7 Foundation of wall on edge of eroded river terrace.



Plate 11 Small cup found in river adjacent to Apron full of Stones